

## WHAT TO BRING...

- **Lunch and snacks**  
(refrigerator/microwave on site)
- **School work and books**  
(Pathway staff will assist if needed)
- **Willingness to cooperate** with Pathway Staff in completing academic and service learning assignments

## PARENTS NEED TO...

- **Contact the Coordinator**
- **Schedule an appointment** to register and complete necessary paperwork
- **Bring assignments** from school. Staff will assist, if needed
- **Provide transportation** to and from the Pathway Program site or the Staunton Office on Youth
- **Support and encourage your child** to cooperate in the Pathway Program to ensure goals are attained and rules are followed

## REGISTER

call  
(540)942-6522

### Long Term Suspension

Call to schedule an appointment to register your child for the program.

### Short Term Suspension

Call to schedule an appointment or walk-in registration at

**PATHWAY office**  
**Rosenwald Community Center**  
**8:15 – 9:00**

**or**

**Staunton Office on Youth**  
**Nelson Street Teen Center**  
**Back Entrance**  
**8:00 – 8:20**

Tammy Zirkle  
Supplemental Education Coordinator  
zirkletl@ci.waynesboro.va.us

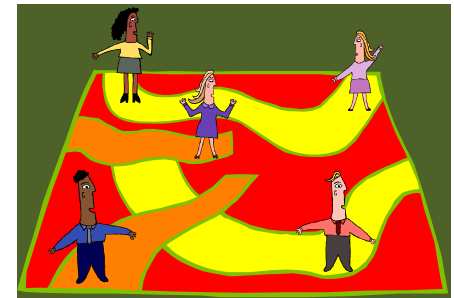
For more program information, visit  
[www.officeonyouth.com](http://www.officeonyouth.com)  
or call

**Central Shenandoah**  
**Valley Office on Youth**  
Staunton Office – 332-3806  
Waynesboro Office – 942-6757



# PATHWAY

Serving Staunton, Waynesboro, and  
Augusta County



## PATHWAY LOCATION

Rosenwald Community Center  
Parks and Recreation Building  
413 Port Republic Road, Rm 10  
Waynesboro, VA 22980

## (540)942-6522

Provided in partnership  
with area schools by the



## PURPOSE

The Pathway Program gives *middle and high* school students who are suspended or expelled from school for three or more days structured activities with an emphasis on the opportunity to complete and/or make-up their school work.

## BENEFITS

- Students **complete missed and/or make-up work** (including homework) while not attending school
- Students **participate in group discussions** with long term students participating in Project Alert
- Students are exposed to **service learning** if they do not have academic requirements
- Students and parents become aware of **support services within the community**

## SCHEDULE

### Short Term Suspended

(3 – 10 days)

Receive academic services and/or service learning opportunities and group sessions

**5 days a week**

Monday – Friday

### Long Term Suspended

(More than 10 days)

Receive academic services and/or service learning opportunities, group sessions, and Project Alert

**2 days a week**

Monday & Wednesday

Tuesday & Thursday

*All schedules will be determined by the Pathway staff in coordination with the Public School System.*

### **Monday – Thursday**

9:00 – 10:15 – Academics/Service Learning\*

10:15 – 10:30 – Snack Break – No socializing

10:30 – 11:45 – Academics/Group

11:45 – 12:15 – Lunch Break

12:15 – 1:30 – Academics/Group

### **Friday**

9:00 – 12:00 – Academics/Service Learning\*

\* Service learning when no academics



## TRANSPORTATION

If you live in the:

### Waynesboro Area

Arrive at **9:00** a.m.

End at **1:30** p.m.

at the

Rosenwald Community Center  
Parks and Recreation Building  
413 Port Republic Road, Rm 10  
Waynesboro, VA 22980  
Fontaine Avenue entrance  
(540)942-6522

### Staunton Area

Arrive at **8:15** a.m.

End at **2:00** p.m.

at the

Staunton Office on Youth \*\*  
Nelson Street Teen Center Back Entrance  
900 Nelson Street  
Staunton, VA 24401  
(540)332-3806

**\*\* Students will be transported to the Rosenwald Community Center**

### HOLIDAYS & DAYS OFF

Pathway follows the schedules and inclement weather policies of the Public School Systems.

**If a student's school is closed, they are not required to attend.**

Occasionally the Pathway Program may not be held; in this event, parents will be notified in advance.